

## Threats to Ecological Value

Non-native species and residential development pose the greatest risks to PCA 1. These risks are currently low, but will likely increase over the next several decades.

Garlic mustard and multiflora rose are well established in some areas of the upland forest and will likely continue to spread in the future. Other potentially threatening non-native species include Japanese barberry, smooth tartarian honeysuckle, and dame's rocket.



Garlic Mustard

Because lakeshore development is popular, the property near Warner Lake will likely receive increasing pressure for residential development. The narrow wildlife travel lane around the northern end of Warner Lake, which connects the large western and eastern halves of this PCA, could easily be disrupted by development along Warner Lake.

## Management Recommendations

PCA 1 is a very good candidate for conservation priority. Approximately half of the site is already under the stewardship of Camp Merrie Woode and, thus, will likely continue to be protected under conservation-oriented management. Camp Merrie Woode is subject to a moderate amount of foot traffic. This should be confined to the upland trails concentrated near the dorms and other facilities. The isolated pond is very much worth saving and not dredging. Shallow fishless ponds are excellent habitat for salamanders, frogs and turtles.



One suggestion for reducing the spread of garlic mustard at this PCA is to organize an early spring garlic mustard round-up and have the scouts pull and bag the invasive plants before they bloom.

## Prairieville Township Warner Lake and Camp Merrie Woode PCA 1

### Location

Potential Conservation Area (PCA) 1 is located in sections 17 and 18 of Prairieville Township. It is a 376-acre site that borders Warner Lake and is generally bounded by 4 Mile Rd., Burchett Rd., and 3 Mile Rd.



High priority potential conservation areas  
Prairieville Township

#### Legend

- state highways
- county roads
- ▭ township boundary
- ▭ lakes
- ▭ rivers
- ▭ sections
- ▭ potential conservation areas



MICHIGAN STATE  
UNIVERSITY  
EXTENSION



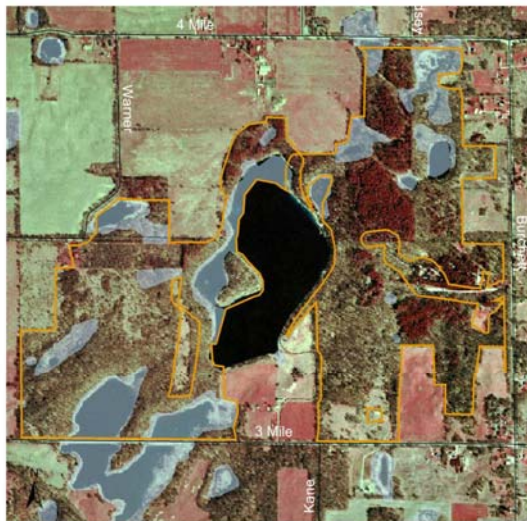
Michigan  
Natural  
Resources  
Inventory



# Diverse Ecosystems

## Site Description

Upland forest habitat predominates in PCA 1, although small depressional wetlands dot the Camp Merrie Woode property. Two larger wetlands are located along the southern edge of the PCA; several moderately sized wetlands are positioned east of Warner Lake. Agricultural land and old fields border most of this site.



Potential conservation area 1  
Prairieville Township  
376 acres

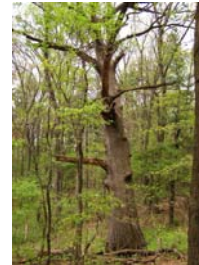
### Legend

- potential conservation area
- roads
- wetlands



## Communities and Ecosystems

The uplands include dry-mesic southern forest and pine plantations.



Small depressions scattered across Camp Merrie Woode span a wide



hydro-logic range, from depressions that dry every year to semi-permanent ponds.

The wetlands along 3 Mile Rd. support emergent marsh communities, but also provide open water habitat.

The wetlands along Warner Lake are important in maintaining water quality in the lake.



Warner Lake Wetlands

## Plants and Animals of Interest

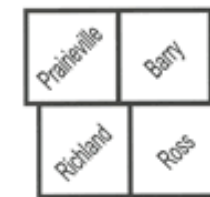


Pink lady's slipper occurs in some areas of the forest.

The small depressional wetlands that dry out during the summer are particularly important for certain frog and salamander species that only reproduce in temporary ponds.



The dome shape of the carapace and yellow throat are characteristics of the Blanding's turtle, which was observed during site visits.



## Four Township Water Resources Council

P.O. Box 634  
Richland, MI 49083-0634  
[www.ftwrc.org](http://www.ftwrc.org)